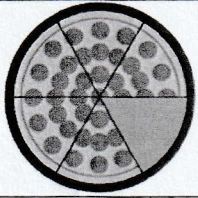
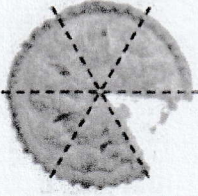


LO: To identify fractions.



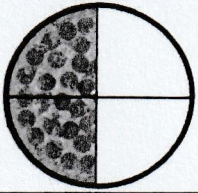
What fraction has been eaten?  $\frac{1}{6}$

What fraction is left?  $\frac{5}{6}$



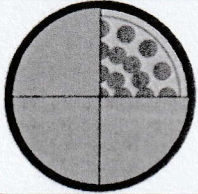
What fraction has been eaten?  $\frac{1}{6}$

What fraction is left?  $\frac{5}{6}$



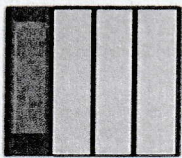
What fraction has been eaten?  $\frac{2}{4}$

What fraction is left?  $\frac{2}{4}$



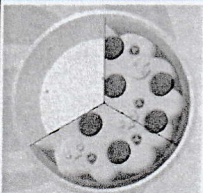
What fraction has been eaten?  $\frac{3}{4}$

What fraction is left?  $\frac{1}{4}$



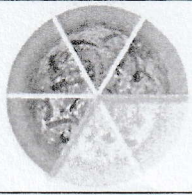
What fraction has been eaten?  $\frac{3}{4}$

What fraction is left?  $\frac{1}{4}$



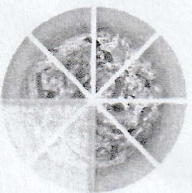
What fraction has been eaten?  $\frac{1}{3}$

What fraction is left?  $\frac{2}{3}$



What fraction has been eaten?  $\frac{2}{6}$

What fraction is left?  $\frac{4}{6}$



What fraction has been eaten?  $\frac{2}{8}$

What fraction is left?  $\frac{6}{8}$